



# SAFETY CONTROL NO. 3



## The Buddy System

2<sup>nd</sup> Edition, dated September 2019

## SAFETY CONTROL (SC) NO. 3

### SC 3.1 Description of the Buddy System

- 3.1.1 In accordance to the IDBF Water Safety Policy (WSP), Teams are required to adopt the Buddy System.
- 3.1.2 In the Buddy System, each person inside the dragon boat is also responsible for the person they are paired with.
- 3.1.3 The system accorded each crew with a partner for mutual checking on safety and support in an emergency such as during a capsize or swamping.

### SC 3.2 General Requirement

*To be practiced and observed at all times, for all aspect of the sport of dragon boating – from recreational to competitive paddling.*

- 3.2.1 Pair the paddlers according to their seating positions.
- 3.2.2 The person at the front (i.e. Trainer. Coach or Drummer) will be paired with the 1<sup>st</sup> Row.
- 3.2.3 The steersperson will be paired with the Last Row.
- 3.2.4 The pairing sequence should be according to the diagram shown:-

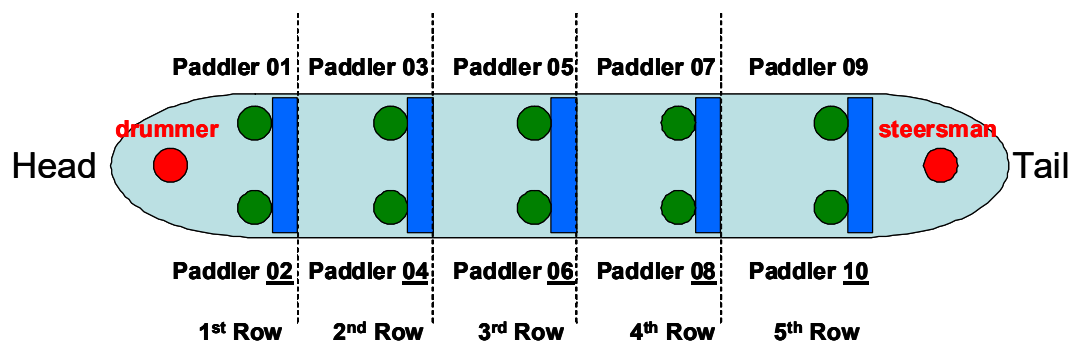
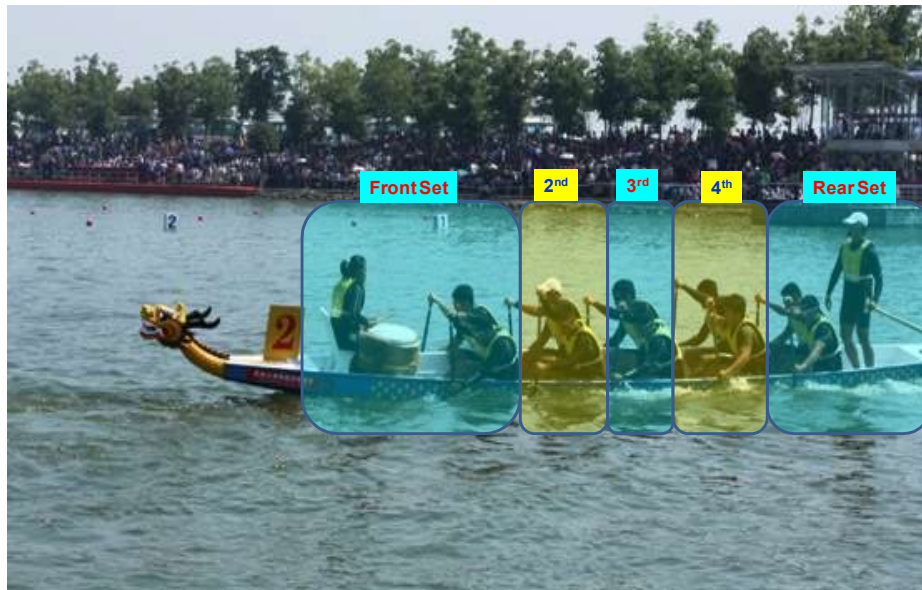


Diagram 1: Example of Buddy System for 10-crew dragon boat

### 3.2.5 Typical DB12 Crew Buddy System pairing



### 3.2.6 Typical DB22 Crew Buddy System pairing



## SC 3.3 Emergency Inside the Dragon Boat

- 3.3.1 Buddies will look out for each other's well being, sign of distress or any other visible negative physical contra-indications.
- 3.3.2 Should any dangerous or emergency situation arises, the Buddy for the person in distress **MUST** alert the Boat Captain.

- 3.3.3 If your Buddy is injured or unwell, you are expected to offer any help and assistance that you possibly could to help your Buddy cope until he/she could be evacuated from the dragon boat.

#### **SC 3.4 Capsize & Swamping Emergency**

- 3.4.1 In a capsize or swamping emergency, after checking on your own physical condition and that there are no injuries, check on the physical condition of your Buddy.
- 3.4.2 If your Buddy is injured or unwell, you **SHOULD ONLY OFFER** any help or assistance if it is within your control and ability to do so. *You must not endanger yourself in the process.*
- 3.4.3 Alert the Boat Captain or the first Rescuer on the scene that your Buddy is injured or unwell and require urgent attention.
- 3.4.4 If your Buddy is physically missing or missed the roll call, **IMMEDIATELY** alert the Boat Captain or the first Rescuer on the scene.

< END >