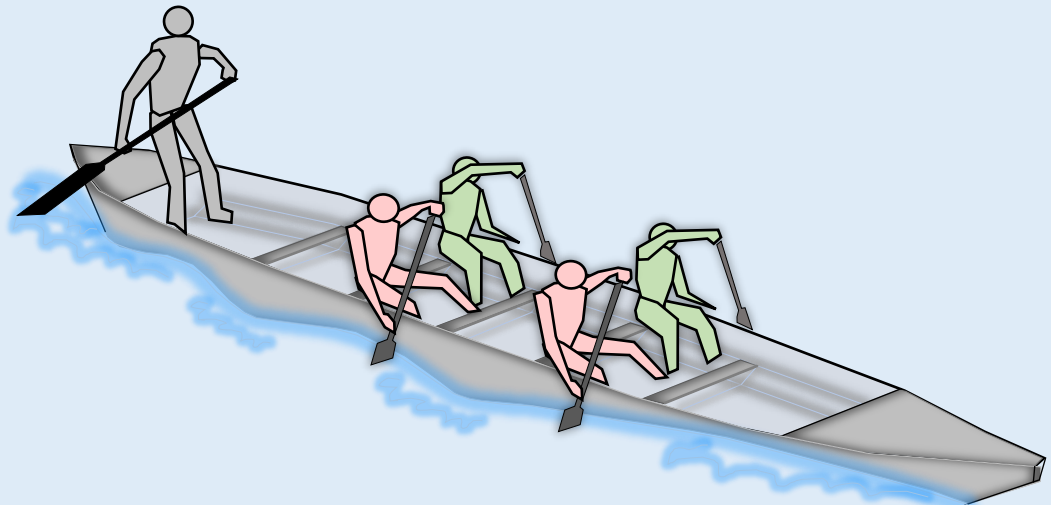


DB12 SAFE MINIMUM CREW CONFIGURATION



Actual Displacement DB12 Full Male Crew		Displacement of 5 Male Pax in DB12	
Weight of DB12 Boat	150 kg	Weight of DB12 Boat	150 kg
Weight of Typical Male	75 kg	Weight of Typical Male	75 kg
Weight of DB12 Male Crew	900 kg	Weight of 5 male pax	375 kg
Total	1050 kg	Total	525 kg
		% of Actual Displacement	50.00%
Actual Displacement DB12 Full Female Crew		Displacement of 5 Female Pax in DB12	
Weight of DB12 Boat	150 kg	Weight of DB12 Boat	150 kg
Weight of Typical Female	55 kg	Weight of Typical Female	55 kg
Weight of DB12 Female Crew	660 kg	Weight of 5 Female pax	275 kg
Total	810 kg	Total	425 kg
		% of Actual Displacement	52.47%

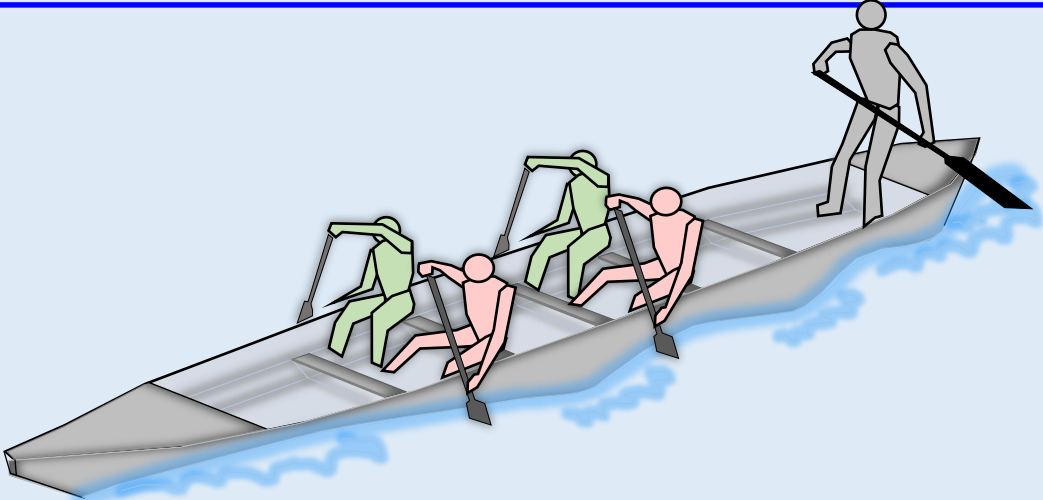
Safe Boat Lifting Plan:

- MOM recommendation is 25kg weight per pax
- 150kg weight of boat/5 persons
- Each person will be lifting = 30kg

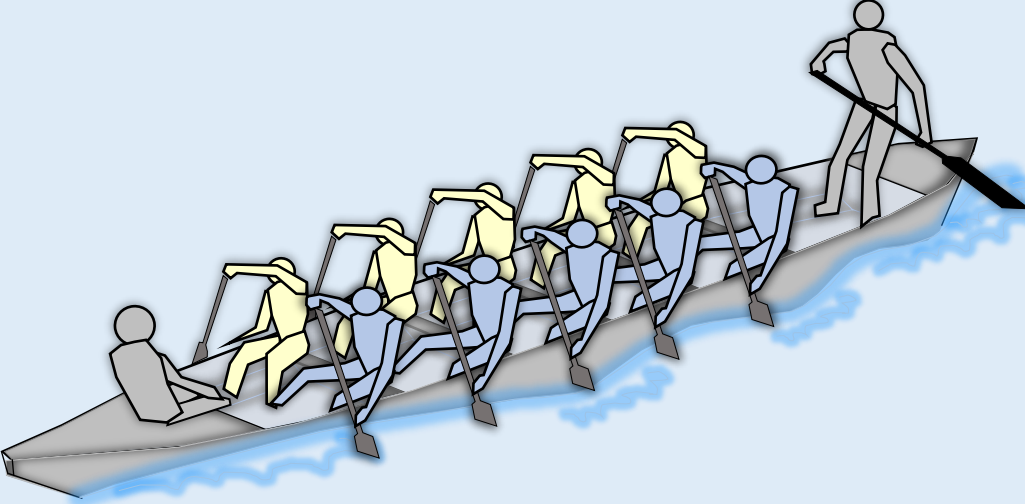
Conclusion:

- Minimum safe displacement achieved
- Lifting of boat will be with difficulty. Emphasis on equipment and technique to alleviate difficulties

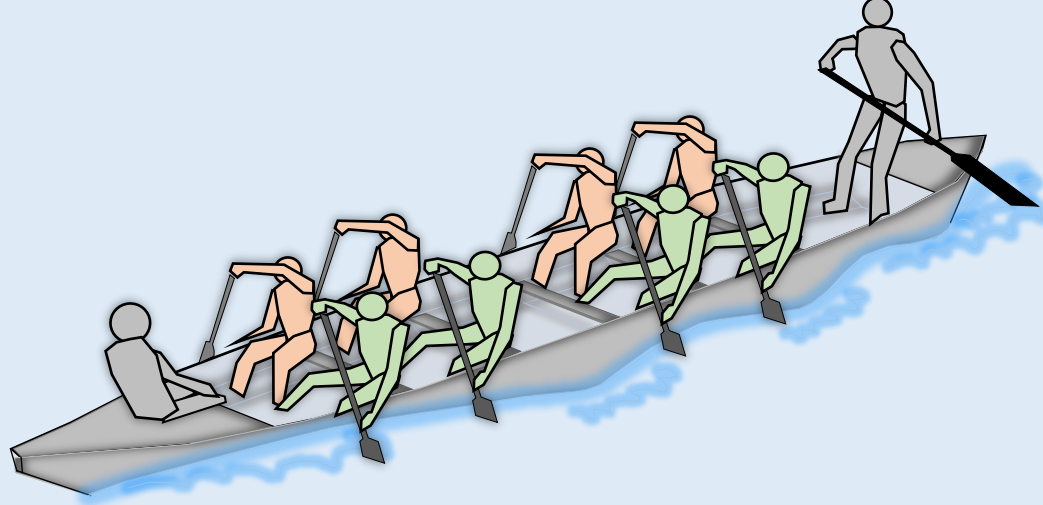
DB12 MINIMUM & MAXIMUM CREW CONFIGURATION



Minimum DB12 crew-size Permitted
4 Paddlers + 1 Coach/Steer (total = 5)



Maximum DB12 crew-size Permitted
10 Paddlers + 1 In-front + 1 Steer (total = 12)



Minimum DB12 crew-size for Racing
8 Paddlers + 1 Drummer + 1 Steer (total = 10)

Maximum DB12 crew-size for Racing
10 paddlers + 1 Drummer + 1 Steer
Optional +2 reserve athletes (total = 14)